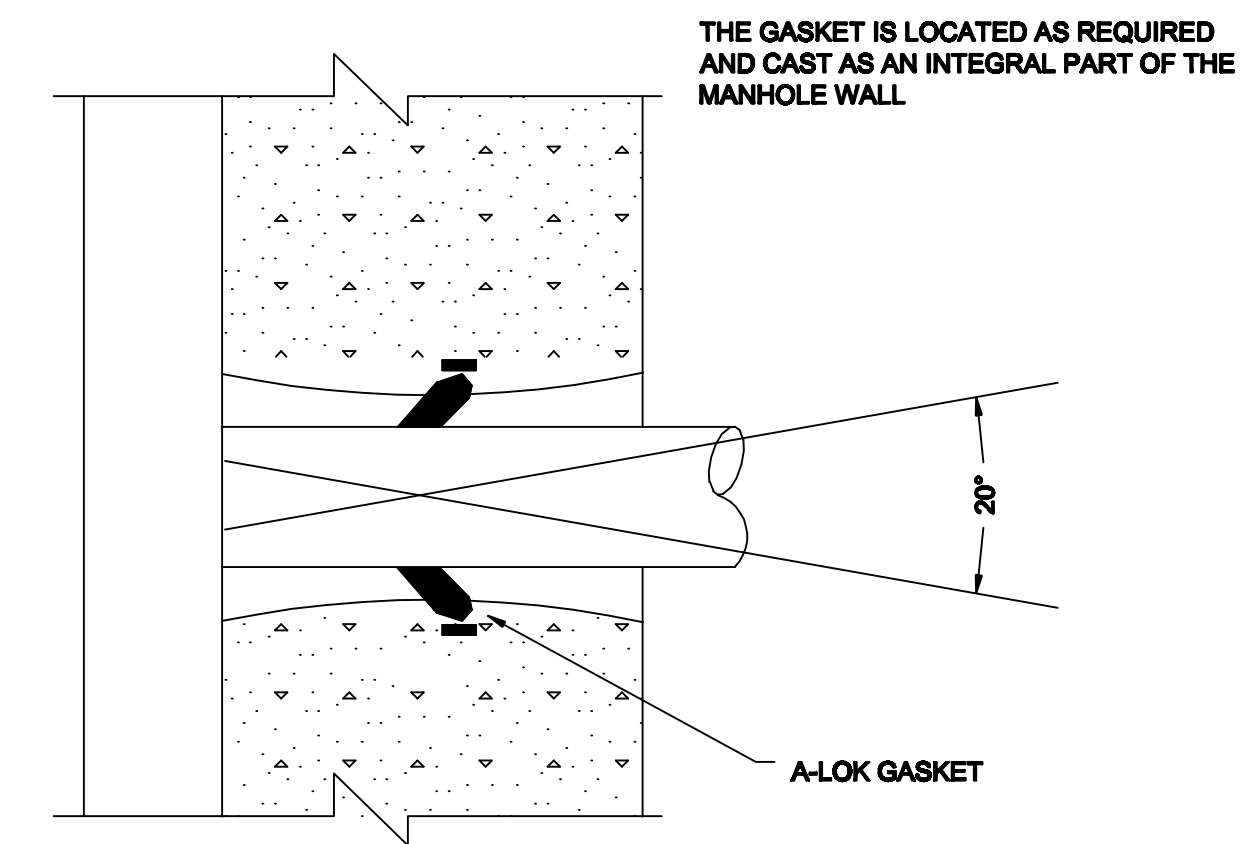
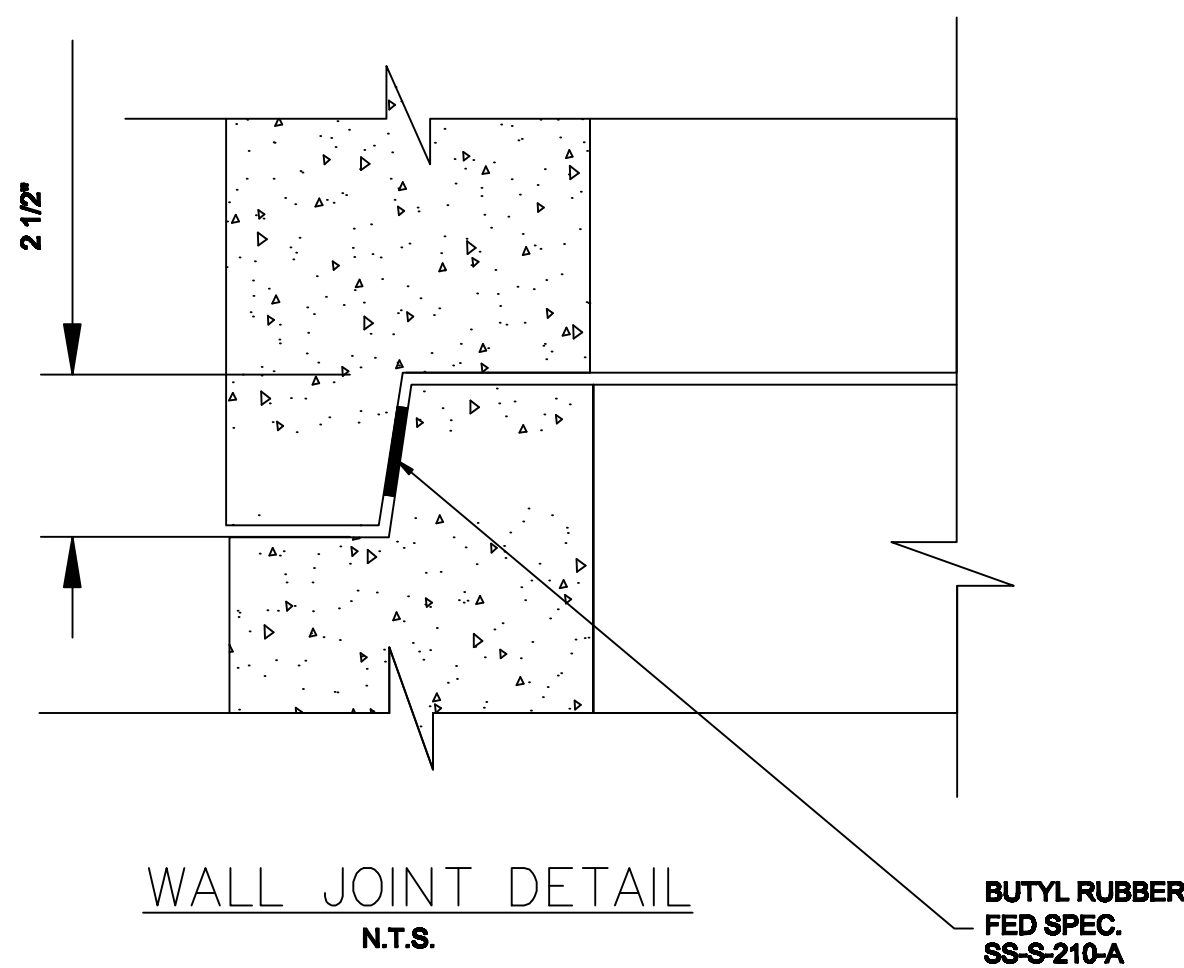


SECTION
TYPE 'A', 'B' OR 'C'
PRECAST MANHOLE OVER EXISTING SEWER
N.T.S.



TYPICAL A-LOK SECTION
GASKET FOR PRECAST MANHOLES
N.T.S.

A-LOK & Z-LOC GASKETS SHALL MEET THE REQUIREMENTS OF ASTM C-923.



NOTES FOR PRECAST MANHOLES

1. PRECAST MANHOLES SHALL BE MANUFACTURED IN ACCORDANCE WITH ASTM C-478. CONCRETE COMPRESSIVE STRENGTH SHALL BE 4,000 PSI IN 28 DAYS.
2. CONCRETE BLOCK/BRICK SHALL BE PLACED ACCORDING TO NJDOT STANDARD SPEC. SECTION 603. JOINTS SHALL BE STAGGERED. A 1/2\" CEMENT PLASTER OF 1:2 CEMENT SAND MORTAR SHALL BE TROWELED TO A SMOOTH SURFACE ON BOTH SIDES OF BLOCK/BRICK SURFACES.
3. HOLES IN MANHOLES SHALL BE CAST 4\" LARGER THAN O.D. OF PIPE.
4. PIPE SHALL BE LAID THROUGH MANHOLES AND TOP BROKEN OUT AFTER CONCRETE BENCH IS POURED.
5. ALL PIPES SHALL BE CUT FLUSH WITH INSIDE FACE OF MANHOLES.

COPYRIGHT 2008, T&M ASSOCIATES - ALL RIGHTS RESERVED. THE COPYING OR REUSE OF THIS DOCUMENT, OR PORTIONS THEREOF, FOR OTHER THAN THE ORIGINAL PROJECT OR THE PURPOSE ORIGINALLY INTENDED, WITHOUT THE WRITTEN PERMISSION OF T&M ASSOCIATES, IS PROHIBITED.

City of Jersey City
Division of Engineering
575 ROUTE 440
JERSEY CITY, NEW JERSEY 07305
(201) 547-4412



NO.	REVISIONS	DATE
1	Equal Changed to Equivalent	7/09

CITY OF JERSEY CITY
STANDARDS

NO.	REVISIONS	DATE

William R. Goble, P.E.
Director
Division of Engineering
NJ P.E. Lic. No. 24798

Date		

Precast Deep Manholes		
DRAWN BY	DESIGNED BY	CHECKED BY
PROJECT NO.	CADD FILE	SCALE

DRAWING
SHEET
5
17